

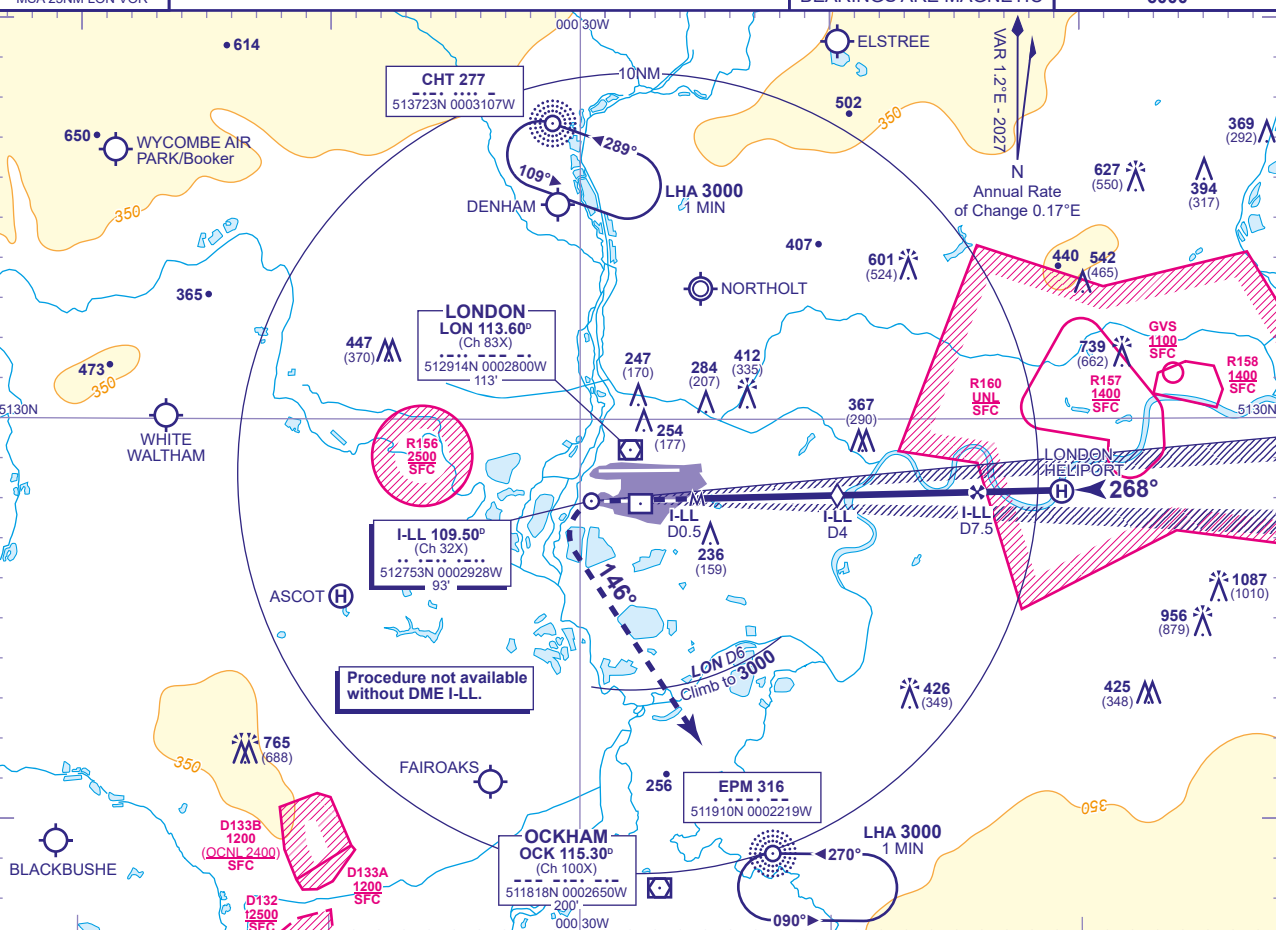
INSTRUMENT APPROACH - ICAO

LONDON HEATHROW

LOC/DME I-LL
RWY 27L
(ACFT CAT A,B,C,D)

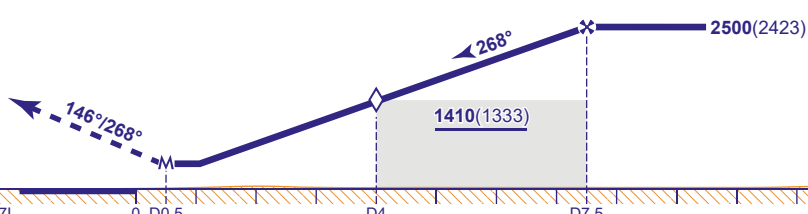


APP 119.730, 120.400, 127.525, 134.980	HEATHROW DIRECTOR	AD ELEVATION 83	TRANSITION ALTITUDE 6000
TWR 118.505, 118.705, 124.480	HEATHROW TOWER	THR ELEVATION 77	
RAD 125.625, 127.525	HEATHROW RADAR	OBSTACLE ELEVATION 1087 AMSL (1010) (ABOVE THR)	
ATIS 128.080, 113.750, 117.000	HEATHROW INFORMATION	BEARINGS ARE MAGNETIC	



RECOMMENDED PROFILE Gradient 5.2%, 318FT/NM						
DME I-LL	7	6	5	4 (SDF)	3	2
ALT(HGT)	2360(2283)	2040(1963)	1730(1653)	1410(1333)	1090(1013)	770(693)

MAPt I-LL DME 0.5
Climb to **2000** - straight ahead until passing **1080** or **I-LL DME** zero inbound whichever is later, then left onto track **146°**. When established and passing **LON DME 6** climb to **3000** without delay. Continue as directed.
RADIO FAILURE: On reaching **3000** proceed to **NDB EPM** at **3000**.



Aircraft Category		A	B	C	D	Rate of descent	G/S KT	160	140	120	100	80
OCA (OCH)	Procedure	640(563)	640(563)	640(563)	640(563)		FT/MIN	850	740	640	530	420
VM(C)OCA (OCH AAL)	Total Area	770(687)	770(687)	940(857)	940(857)							

NOTE Aircraft will normally be radar vectored from the STAR Holding/Initial Approach Fixes.

CHANGE (13/25): MAG VAR UPDATED. MAG HEADINGS.